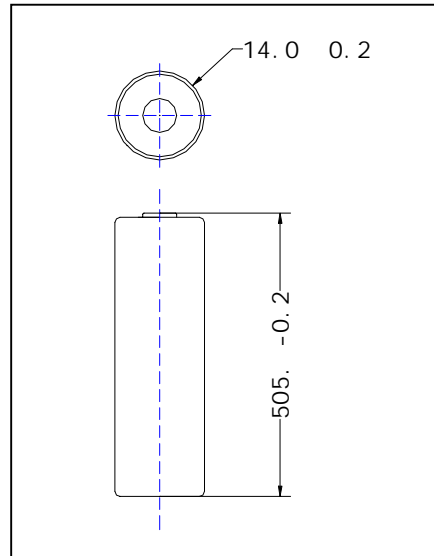


Manganese Dioxide Lithium Battery(Li/MnO₂)

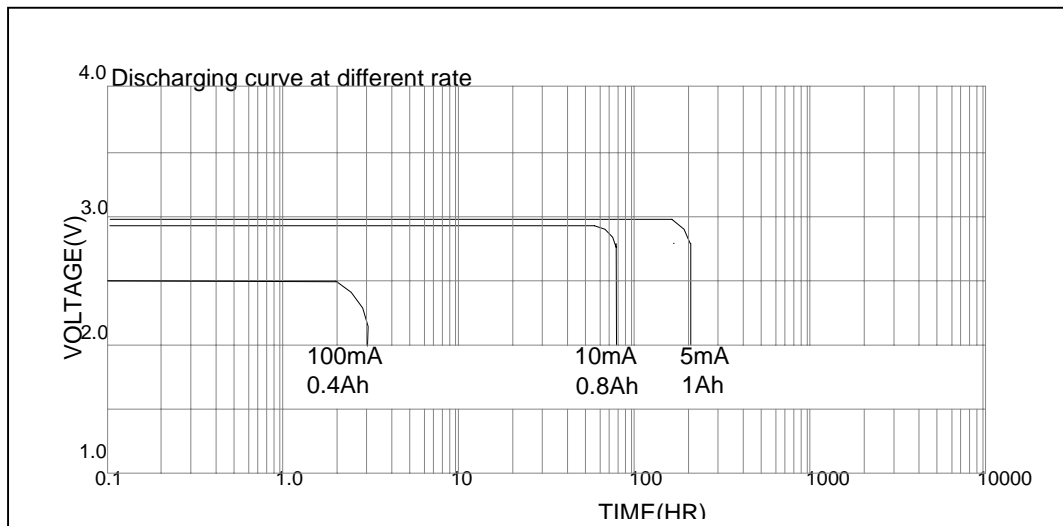
MODEL: CR14505

Nominal capacity (1mA to 2.0V)	1200 mAh
Nominal voltage	3.0 V
Max. Continuous Operating current	1000 mA
Max. Pulse current	2500 mA
Battery weight	17 g
Battery Dimension mm	$\phi 14.0^{\pm 0.2} \times 50.5^{-0.2}$
operating temperature	-40°C~+60°C



Notes: All dimensions are in mm.
Tolerance is ±0.3mm.

Characteristics



Warning:

- .Do not short-circuit;
- .Do not recharge, force over-discharge, assemble / disassemble and crush; risk of fire and burns;
- .Do not use under temperature above specified range