

## Maintenance-Free Rechargeable Sealed Lead-Acid Battery



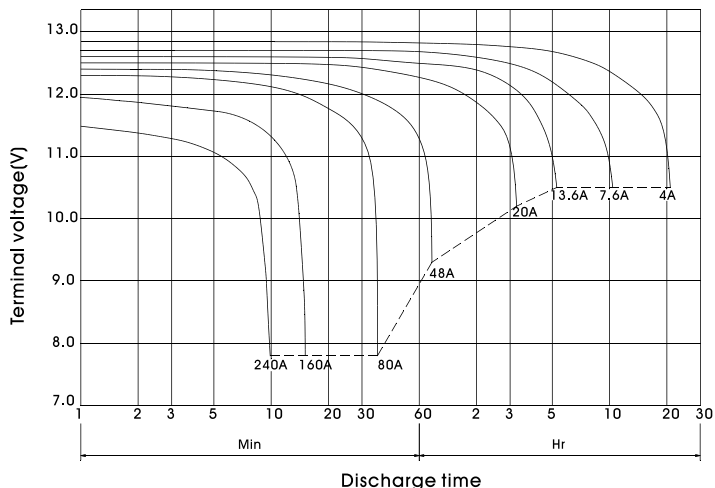
# BP80-12

The battery is constructed by plates, separators, safety valves, flame arrestors and container. Since the electrolyte is held by a glass-mat separator and plates, the battery can use in any direction and position without leakage.

### PERFORMANCE SPECIFICATIONS

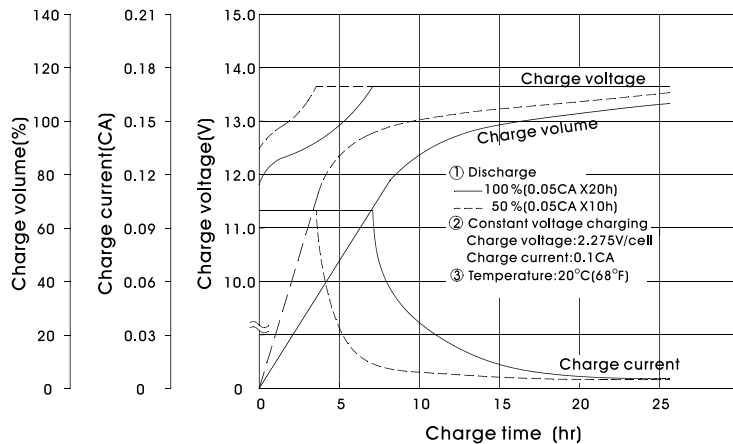
<b>Nominal Voltage(V)</b> .....	12 volts(6cells in series)
<b>Nominal Capacity(AH)</b>	
20 Hour rate F.V.(1.75V/cell) (4.00A to 10.50volts) .....	80A.H.
10 Hour rate F.V.(1.75V/cell) (7.60A to 10.50volts) .....	76A.H.
5 Hour rate F.V.(1.75V/cell) (13.6A to 10.50volts).....	68A.H.
1 Hour rate F.V.(1.55V/cell) (48.0A to 9.30volts).....	48A.H.
<b>Approximate Weight</b> .....	33.5kg(73.87lbs.)
<b>Terminal</b>	
Standard.....	Type B3
<b>Internal Resistance (Fully Charged Battery)</b> .....	<5m Ω
<b>Maximum Discharge Current For 5 sec.(A)</b> .....	800A
<b>Maximum Charge Current(A)</b> .....	24A
<b>Ambient Temperature</b>	
Charge.....	0°C(32°F)~40°C(104°F)
Discharge.....	-20°C(-4°F)~50°C(122°F)
Storage.....	-20°C(-4°F)~40°C(104°F)
<b>Case</b> .....	ABS
<b>Dimension(mm/inch)</b>	
Length ±2mm.....	329/12.95
Width ±2mm.....	172/6.77
Container Height ±2mm.....	215/8.46
Total Height ±2mm.....	238/9.37
<b>Application</b> .....	UPS,TELCOM,Golf-Carts.

## BP80-12 Battery discharge characteristics (25°C/77°F)



## BATTERY CHARGING CHARACTERISTICS

(Typical example of the charge characteristics for the standby use)

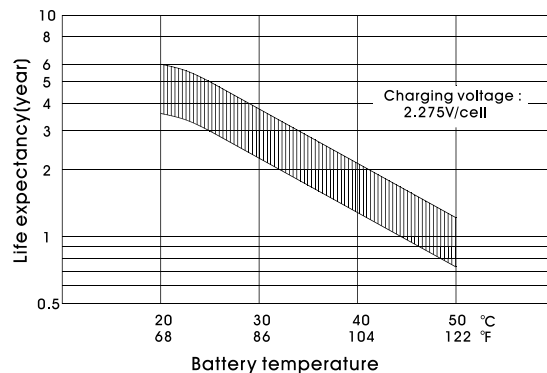


### Charging Procedure

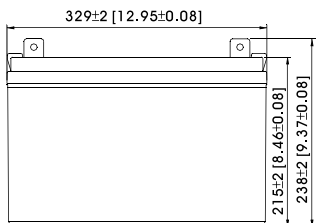
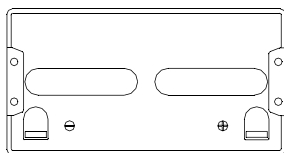
Application	Charging method	Charging Voltage at 20°C (V/cell)	Temperature compensation coefficient of charging voltage (mV/°C/cell)	Max. charging current (CA)	Charging time 0.1CA, 20°C (h)		Temp (°C)
					100% discharge	50% discharge	
For standby power Source	Constant voltage & Constant current charging (with current restriction)	2.25~2.30	-3	0.3	24	20	0~40 (32~104°F)
For cycle service		2.40~2.50	-4	0.3	16	10	

\*Temperature compensation of charging voltage is not needed, when using the batteries within 5°C to 35°C range.

### Effect of Temperature on Long Term Float Life

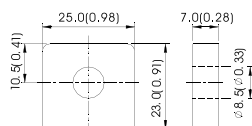


### OUTER DIMENSIONS mm(inch)

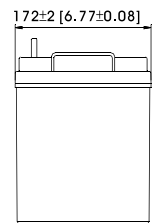


### TERMINAL TYPE mm(inch)

●Terminal B3



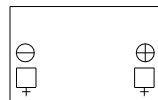
(M8 BOLT & NUT)



### Constant power discharge characteristics at 25°C/77°F

Final Voltage	Discharge time									
	5Min	10Min	15Min	30Min	1Hr	3Hr	5Hr	10Hr	20Hr	
10.80V	2892.6	2129.1	1706.3	1014.9	582.29	233.14	160.80	89.83	46.97	
10.50V	3347.4	2306.3	1785.1	1053.7	599.66	237.83	163.20	91.20	48.00	
10.20V	3556.6	2389.7	1840.0	1077.7	610.51	240.00	164.11	91.66	48.23	
9.90V	3716.6	2446.9	1882.3	1092.6	617.83	241.71	164.69	91.89	48.34	
9.60V	3840.0	2496.0	1920.0	1104.0	624.00	243.09	165.14	91.89	48.34	

### TERMINAL POSITION



**B.B. BATTERY CO., LTD.** Web Site: <http://www.bb-battery.com>

#### USA :

B&B BATTERY (USA) INC.  
6415 RANDOLPH ST. COMMERCE,  
CA, 90040 U.S.A.  
TEL: 1-323-278-1900 . 1-800-278-8599  
FAX: 1-323-278-1268

#### CHINA FACTORY:

CHENG DONG TRIAL AREA, HUANG GANG,  
RAOPING GUANG DONG, CHINA, 515700  
TEL: 86-768-7601001-2  
FAX: 86-768-7601469

#### UK:

B & B BATTERY (UK) CO., LTD.  
TEL: 44-161-343-7430  
FAX: 44-161-343-7030

#### HONG KONG OFFICE:

NATIONAL TRADING LTD.  
TEL: 852-2301-3800  
FAX: 852-2739-1182

#### JAPAN:

B & B BATTERY (JAPAN) CO., LTD.  
TEL: 81-426-256-537  
FAX: 81-426-256-537

#### TAIWAN OFFICE:

B & B BATTERY CO., LTD.  
TEL: 886-6-2607335  
FAX: 886-6-2602402



MH19884

