

Maintenance-Free Rechargeable Sealed Lead-Acid Battery

BP4-6

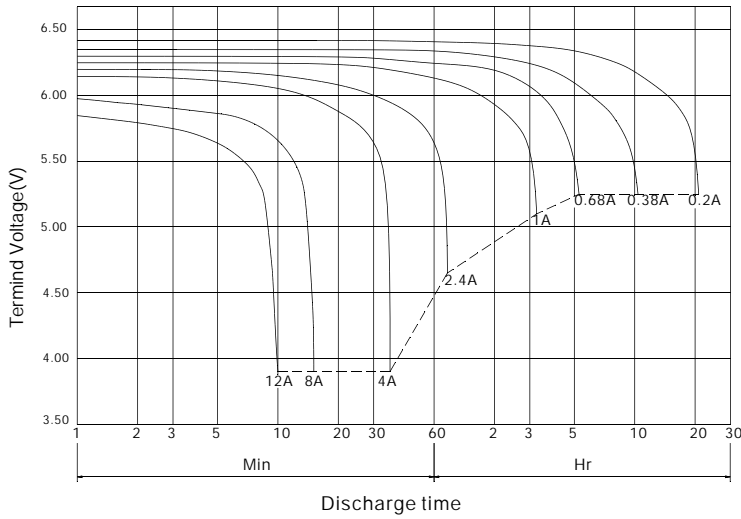


The battery is constructed by plates, separators, safety valves and container. Since the electrolyte is held by a glass-mat separator and plates, the battery can use in any direction and position without leakage.

PERFORMANCE SPECIFICATIONS

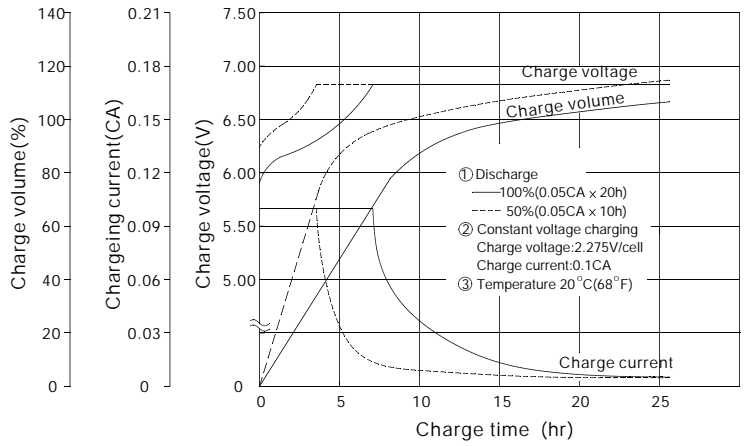
Nominal Voltage(V).....	6 volts(3cells in series)
Nominal Capacity(AH)	
20 hour rate F.V.(1.75V/cell) (200mA to 5.25volts)	4.0A.H.
10 hour rate F.V.(1.75V/cell) (380mA to 5.25volts)	3.8A.H.
5 hour rate F.V.(1.75V/cell) (680mA to 5.25volts)	3.4A.H.
1 hour rate F.V.(1.55V/cell) (2400mA to 4.65volts).....	2.4A.H.
Approximate Weight.....	850g(1.87lbs.)
Terminal	
Standard.....	Type T1
Optional.....	Type T2
Internal Resistance (Fully Charged Battery).....	<25mΩ
Maximum Discharge Current For 5 sec.(A).....	60A
Maximum Charge Current(A).....	1.2A
Ambient Temperature	
Charge.....	0°C(32°F)~40°C(104°F)
Discharge.....	-20°C(-4°F)~50°C(122°F)
Storage.....	-20°C(-4°F)~40°C(104°F)
Vibration test:	
Frequency: 16.7HZ	
Amplitude: 4mm	
Vibrate the battery horizontally or vertically for 60 minutes. The battery have no abnormality.	
Case.....	ABS
Dimension(mm/inch)	
Length ±1.5mm.....	70/2.76
Width ±1.5mm.....	47/1.85
Container Height ±1.5mm.....	101/3.98
Total Height ±2mm.....	106/4.17
Application.....	Electronic Toy-Cars, Emergency Lights, Rechargeable Flashlights, UPS, Fans.

BP4-6 Battery discharge characteristics (25°C/77°F)



BATTERY CHARGING CHARACTERISTICS

(Typical example of the charge characteristic for the standby use)

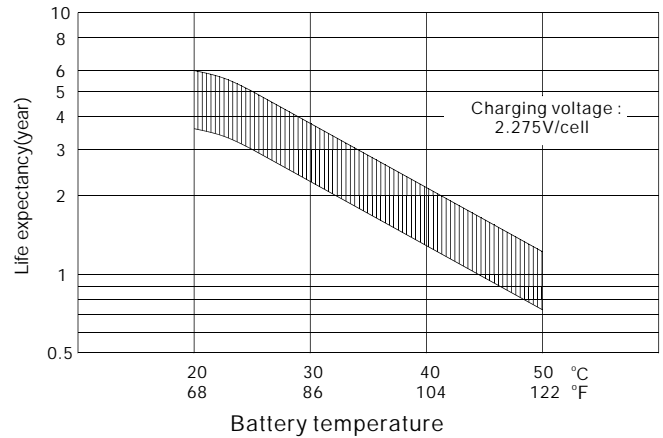


Charging Procedure

Application	Charging method	Charging Voltage at 20°C (V/cell)	Temperature compensation coefficient of charging voltage (mV/°C/cell)	Max. charging current (CA)	Charging time 0.1CA, 20°C (h)		Temp (°C)
					100% discharge	50% discharge	
For standby power Source	Constant voltage & Constant current charging (with current restriction)	2.25~2.30	-3	0.3	24	20	0-40 (32-104°F)
For cycle service		2.40~2.50	-4	0.3	16	10	

*Temperature compensation of charging voltage is not needed, when using the batteries within 5°C to 35°C range.

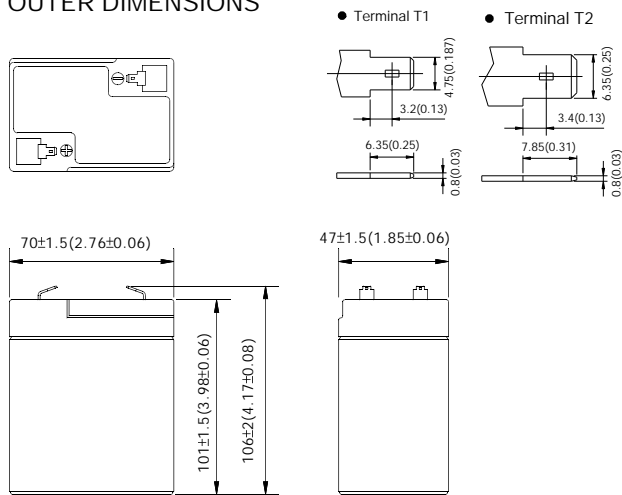
Effect of Temperature on Long Term Float Life



TERMINAL TYPE

mm (inch)

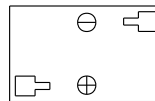
OUTER DIMENSIONS



Constant power discharge characteristics at 25°C/77°F

Final Voltage	Discharge time									
	5Min	10Min	15Min	30Min	1Hr	3Hr	5Hr	10Hr	20Hr	
5.40V	72.3	53.2	42.7	25.4	14.56	5.83	4.02	2.25	1.17	
5.25V	83.7	57.7	44.6	26.3	14.99	5.95	4.08	2.28	1.20	
5.10V	88.9	59.7	46.0	26.9	15.26	6.00	4.10	2.29	1.21	
4.95V	92.9	61.2	47.1	27.3	15.45	6.04	4.12	2.30	1.21	
4.80V	96.0	62.4	48.0	27.6	15.60	6.08	4.13	2.30	1.21	

TERMINAL POSITION



B.B. BATTERY CO., LTD. Web Site: <http://www.bb-battery.com>

USA :

B&B BATTERY (USA) INC.
6415 RANDOLPH ST. COMMERCE,
CA, 90040 U.S.A.
TEL: 1-323-278-1900 1-800-278-8599
FAX: 1-323-278-1268

CHINA FACTORY:

CHENG DONG TRIAL AREA, HUANG GANG,
RAOPING GUANG DONG, CHINA, 515700
TEL: 86-768-7601001-2
FAX: 86-768-7601469

UK:

B & B BATTERY (UK) CO., LTD.
TEL: 44-161-339-9458
FAX: 44-161-343-7030

HONG KONG:

NATIONAL TRADING LTD.
TEL: 852-2301-3800
FAX: 852-2739-1182

JAPAN:

B & B BATTERY (JAPAN) CO., LTD.
TEL: 81-426-256-537
FAX: 81-426-256-537

TAIWAN:

B & B BATTERY CO., LTD.
TEL: 886-6-5898081-3
FAX: 886-6-5898087



MH19884

